

Catalogue

Chapter

Model

PS-50/330 TP2 E 230/400/440V 3/3N 50/60H

18003041

19/02/2020

FLATWORK IRONER, PS-50/330 TP2 E

MAINTENANCE CARE

Simple, reliable and accesible mechanism in which the components have been designed and manufactured with the highest quality and prestige.

STAINLESS STEEL DESIGN

Panels made of stainless steel and steel with grey coating, inox aesthetic (skinplate), easy to clean and more hygienic.

INVERTER

Frequency inverter in all models.

TP2 7" TOUCH SCREEN CONTROL

New Touch Plus control with 7" touchscreen which offers great flexibility and ease of use, as well as new features that enable better management of the laundry.

HIGH-TECH ROLL

High-performance steel roller.

- Front insertion and reception of linen.
- Variable-frequency drive to control ironing speed.
- Safety protector for hands
- Automatic stop on cooling (80 °C)
- Unit exterior constructed in sandwich panel and stainless steel.
- Powerful exhaust extraction system.
- Insertion and ironing belts in Nomex for easy operation, high quality ironing and great durability.
- Electric heated model.
- 7 ironing speeds, adjustable by variablefrequency drive, for selection between 1.5 and 15 m/ minute.
- Two vapour extraction connections of 153 mm diameter.
- Table height of 1030 mm.

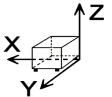
Options

- Smart system: Moisture control that adapts to the speed of the roller depending on the dampness of the clothes.
- Chromed roll for better performance and durability.
- Folder + Rear exit.
- HPS: High production system.

"Note: You are recommended to insert the linen with a maximum moisture level of 45%."

DIMENSIONS

X Width	4130 mm	X Gross width	4385 mm
Y Depth	1160 mm	Y Gross depth	1170 mm
Z Height	1420 mm	Z Gross height	1675 mm
Net Weight	1,430,0 kg	Gross Weight	1,480,0 kg
Net volume	6,810 m3	Gross volume	8,594 m3



ELECTRICITY TECHNICAL SPECIFICATIONS

Engine power	0,37 kW
Fan Motor Power	0,25 kW
Electric power	54,870 kW
Amperage (A)	100A
Heating power	54,00 kW
Voltage	230/400/440V - 3/3N
Electric frequency	50/60Hz

AIR TECHNICAL SPECIFICATIONS

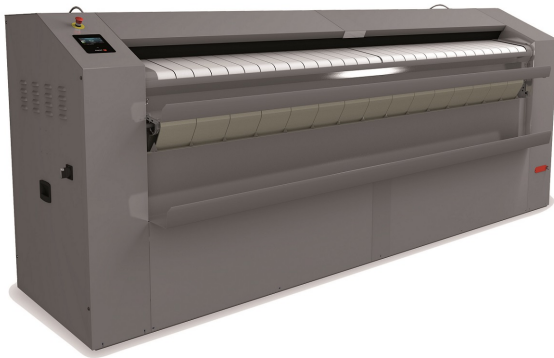
Maximum airflow	1200 m3/h
-----------------	-----------

CONNECTIONS TECHNICAL SPECIFICATIONS

230 V three-phase wiring	4 X 35 / 160A
Three-phase +N 400V wiring	5 X 25 / 100A
Extraction 1 diameter	153,00 mm

OTHERS

Roller length in cm	330,00 cm
Roller diameter	500 mm
Production 45% moisture	80 - 120 kg/h
Operational speed	1,00 - 8,00 m/min
Noise level	65,00 dB



Catalogue

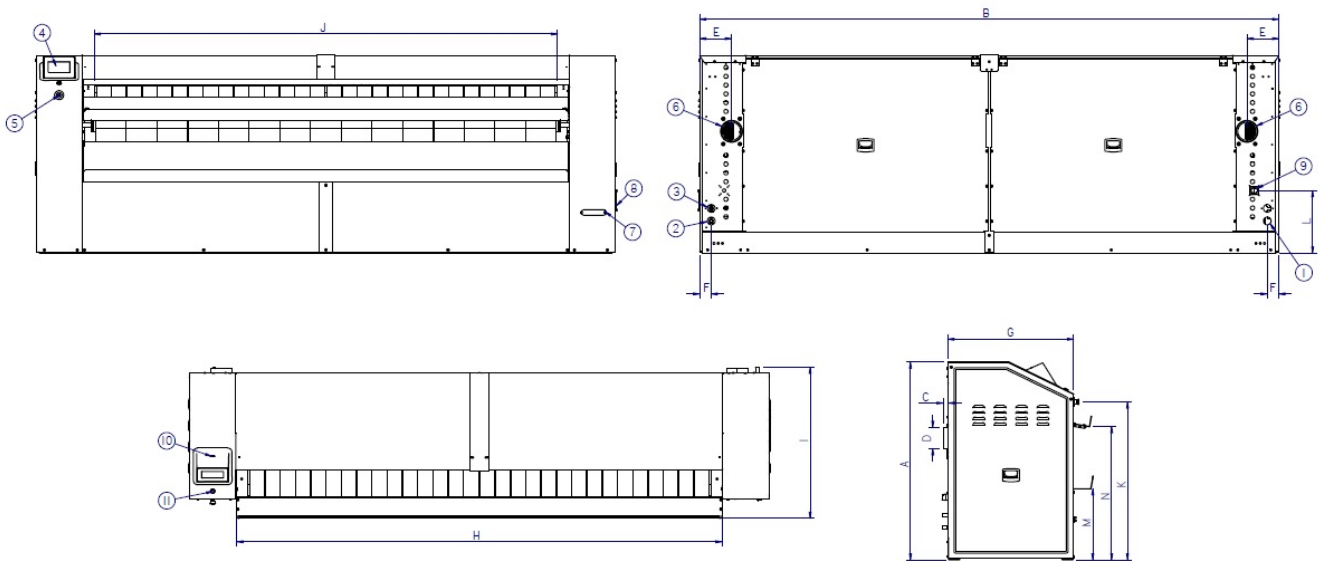
Chapter

Model

PS-50/330 TP2 E 230/400/440V 3/3N 50/60H

18003041

19/02/2020



	A	B	C	D	E	F	G	H	I	J	K	L	M	N
PS-65/330	1413	4129	36	Ø152	228	83	897	3460	1079	3304	1128	447	509	952
PS-65/260	1413	3429	36	Ø152	228	83	897	2760	1079	2604	1128	447	509	952
PS-65/200	1413	2829	36	Ø152	228	83	897	2160	1079	2004	1128	447	509	952
PS-50/330	1413	4129	36	Ø152	228	83	897	3460	1079	3304	1128	447	509	952
PS-50/260	1413	3429	36	Ø152	228	83	897	2760	1079	2604	1128	447	509	952
PS-50/200	1413	2829	36	Ø152	228	83	897	2160	1079	2004	1128	447	509	952

PS-65-50

- 1 Arrivée électrique
- 2 Arrivée gaz ou vapeur
- 3 Sortie vapeur
- 4 Panneau de commande
- 5 Arrêt d'urgence
- 6 Evacuation gaz brûlés et/ou buées
- 7 Contacteur manivelle
- 8 Manivelle
- 9 Sectionneur
- 10 Port USB
- 11 Marche arrière

PS-65-50

- 1 Electrical connetion
- 2 Gas or steam inlet
- 3 Steam outlet
- 4 Control panel
- 5 Emergency stop
- 6 Exhaust
- 7 Crank contactor
- 8 Crank
- 9 Main switch
- 10 USB Port
- 11 Start / Stop

PS-65-50

- 1 Conexión eléctrica
- 2 Entrada de gas o vapor
- 3 Salida de vapor
- 4 Pnael de control
- 5 Parada de emergencia
- 6 Salida de vahos
- 7 Contactor de manivela
- 8 Manivela
- 9 Interruptor general
- 10 Puerto USB
- 11 Start / Stop