

## Catalogue

## Chapter

## Model

PS-65/330 TP2 E 400-440V 3/3N 50/60Hz

18003054

19/02/2020

### FLATWORK IRONER, PS-65/330 TP2 E

#### MAINTENANCE CARE

Simple, reliable and accesible mechanism in which the components have been designed and manufactured with the highest quality and prestige.

#### STAINLESS STEEL DESIGN

Panels made of stainless steel and steel with grey coating, inox aesthetic (skinplate), easy to clean and more hygienic.

#### INVERTER

Frequency inverter in all models.

#### TP2 7" TOUCH SCREEN CONTROL

New Touch Plus control with 7" touchscreen which offers great flexibility and ease of use, as well as new features that enable better management of the laundry.

#### HIGH-TECH ROLL

High-performance steel roller.

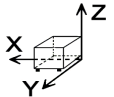
- Front insertion and reception of linen.
- Variable-frequency drive to control ironing speed.
- Safety protector for hands
- Automatic stop on cooling (80 °C)
- Unit exterior constructed in sandwich panel and stainless steel.
- Powerful exhaust extraction system.
- Insertion and ironing belts in Nomex for easy operation, high quality ironing and great durability.
- Electric heated model.

#### Options

- Chromed roll for better performance and durability.
- Folder + Rear exit.

"Note: You are recommended to insert the linen with a maximum moisture level of 45%."

### DIMENSIONS



X Width	4130 mm	X Gross width	4385 mm
Y Depth	1160 mm	Y Gross depth	1170 mm
Z Height	1420 mm	Z Gross height	1675 mm
Net Weight	1,765,0 kg	Gross Weight	1,815,0 kg
Net volume	6,810 m3	Gross volume	8,594 m3

### ELECTRICITY TECHNICAL SPECIFICATIONS

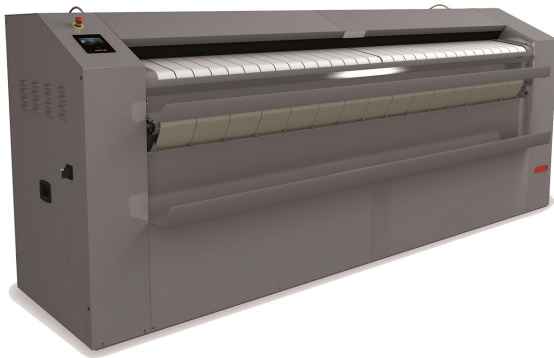
Engine power	0,55 kW
Electric power	73,050 kW
Amperage (A)	125A
Heating power	72,00 kW
Voltage	400-440V - 3/3N
Electric frequency	50/60Hz

### CONNECTIONS TECHNICAL SPECIFICATIONS

Three-phase +N 400V wiring	5 X 25 / 125A
----------------------------	---------------

### OTHERS

Load capacity 1/9	330,00 kg
Roller length in cm	330,00 cm
Roller diameter	650 mm
Production 45% moisture	104 - 160 kg/h
Operational speed	1,00 - 15,00 m/min
Noise level	65,00 dB



Catalogue

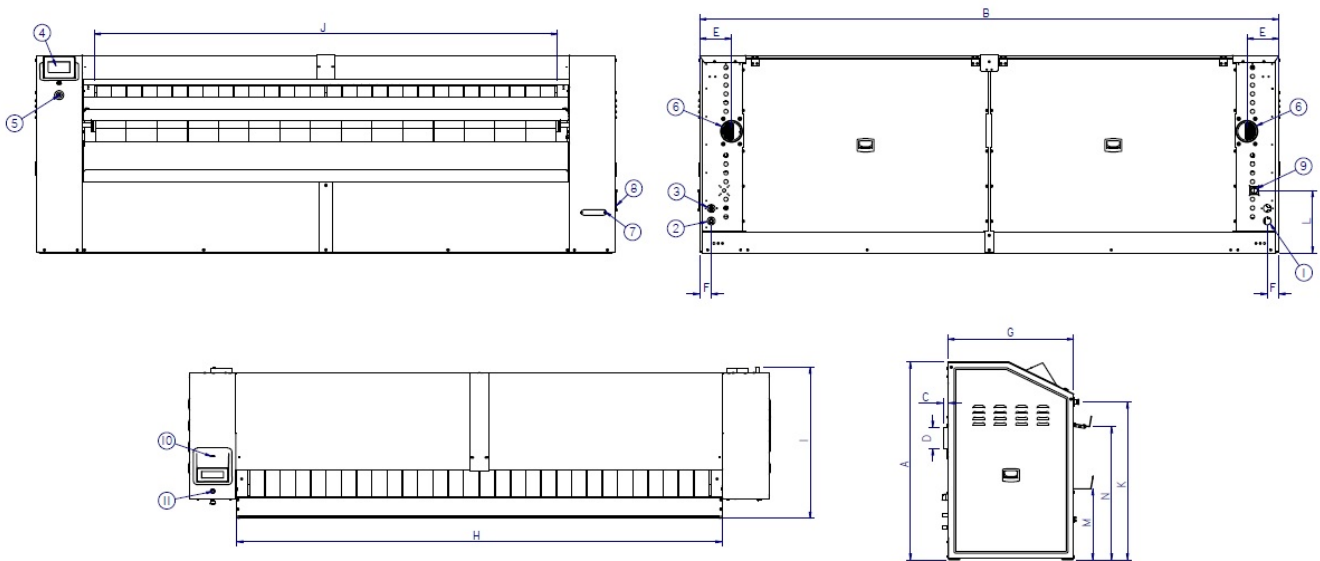
Chapter

Model

**PS-65/330 TP2 E 400-440V 3/3N 50/60Hz**

18003054

19/02/2020



	A	B	C	D	E	F	G	H	I	J	K	L	M	N
PS-65/330	1413	4129	36	Ø152	228	83	897	3460	1079	3304	1128	447	509	952
PS-65/260	1413	3429	36	Ø152	228	83	897	2760	1079	2604	1128	447	509	952
PS-65/200	1413	2829	36	Ø152	228	83	897	2160	1079	2004	1128	447	509	952
PS-50/330	1413	4129	36	Ø152	228	83	897	3460	1079	3304	1128	447	509	952
PS-50/260	1413	3429	36	Ø152	228	83	897	2760	1079	2604	1128	447	509	952
PS-50/200	1413	2829	36	Ø152	228	83	897	2160	1079	2004	1128	447	509	952

**PS-65-50**

- 1 Arrivée électrique
- 2 Arrivée gaz ou vapeur
- 3 Sortie vapeur
- 4 Panneau de commande
- 5 Arrêt d'urgence
- 6 Evacuation gaz brûlés et/ou buées
- 7 Contacteur manivelle
- 8 Manivelle
- 9 Sectionneur
- 10 Port USB
- 11 Marche arrière

**PS-65-50**

- 1 Electrical connetion
- 2 Gas or steam inlet
- 3 Steam outlet
- 4 Control panel
- 5 Emergency stop
- 6 Exhaust
- 7 Crank contactor
- 8 Crank
- 9 Main switch
- 10 USB Port
- 11 Start / Stop

**PS-65-50**

- 1 Conexión eléctrica
- 2 Entrada de gas o vapor
- 3 Salida de vapor
- 4 Pnael de control
- 5 Parada de emergencia
- 6 Salida de vahos
- 7 Contactor de manivela
- 8 Manivela
- 9 Interruptor general
- 10 Puerto USB
- 11 Start / Stop