

Catalogue

Chapter

Model

PS-65/200 TP2 G 120/230/400/440V 3N/3/1N

18002987

19/02/2020

FLATWORK IRONER, PS-65/200 TP2 G

MAINTENANCE CARE

Simple, reliable and accesible mechanism in which the components have been designed and manufactured with the highest quality and prestige.

STAINLESS STEEL DESIGN

Panels made of stainless steel and steel with grey coating, inox aesthetic (skinplate), easy to clean and more hygienic.

INVERTER

Frequency inverter in all models.

TP2 7" TOUCH SCREEN CONTROL

New Touch Plus control with 7" touchscreen which offers great flexibility and ease of use, as well as new features that enable better management of the laundry.

HIGH-TECH ROLL

High-performance steel roller.

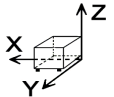
- Front insertion and reception of linen.
- Variable-frequency drive to control ironing speed.
- Safety protector for hands
- Automatic stop on cooling (80 °C)
- Unit exterior constructed in sandwich panel and stainless steel.
- Powerful exhaust extraction system.
- Insertion and ironing belts in Nomex for easy operation, high quality ironing and great durability.
- Gas heated model with atmospheric burner.
- 7 ironing speeds, adjustable by variablefrequency drive, for selection between 1.5 and 15 m/ minute.
- Two vapour extraction connections of 153 mm diameter.
- Table height of 1030 mm.

Options

- Chromed roll for better performance and durability.
- Folder + Rear exit.

"Note: You are recommended to insert the linen with a maximum moisture level of 45%."

DIMENSIONS



X Width	2820 mm	X Gross width	3075 mm
Y Depth	1160 mm	Y Gross depth	1170 mm
Z Height	1420 mm	Z Gross height	1675 mm
Net Weight	1,189,0 kg	Gross Weight	1,219,0 kg
Net volume	4,650 m3	Gross volume	6,026 m3

ELECTRICITY TECHNICAL SPECIFICATIONS

Engine power	0,55 kW
Electric power	1,050 kW
Amperage (A)	6A
Voltage	120/230/400/440V - 3N/3/1N
Electric frequency	50/60Hz

GAS TECHNICAL SPECIFICATIONS

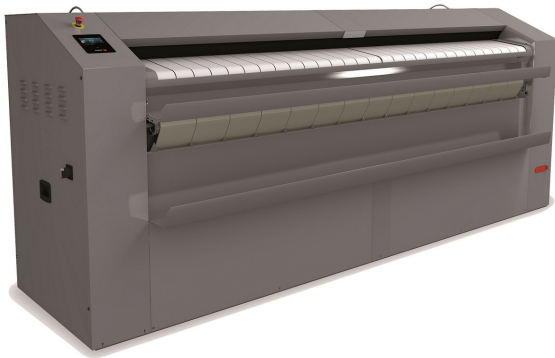
Gas power	52,00 kW
-----------	----------

CONNECTIONS TECHNICAL SPECIFICATIONS

230 V three-phase wiring	4 X 2.5 / 6A
Three-phase +N 400V wiring	5 X 2.5 / 6A
Gas diameter 1	1"

OTHERS

Load capacity 1/9	200,00 kg
Roller length in cm	330,00 cm
Roller diameter	650 mm
Production 45% moisture	65 - 90 kg/h
Operational speed	1,00 - 15,00 m/min
Noise level	65,00 dB



Catalogue

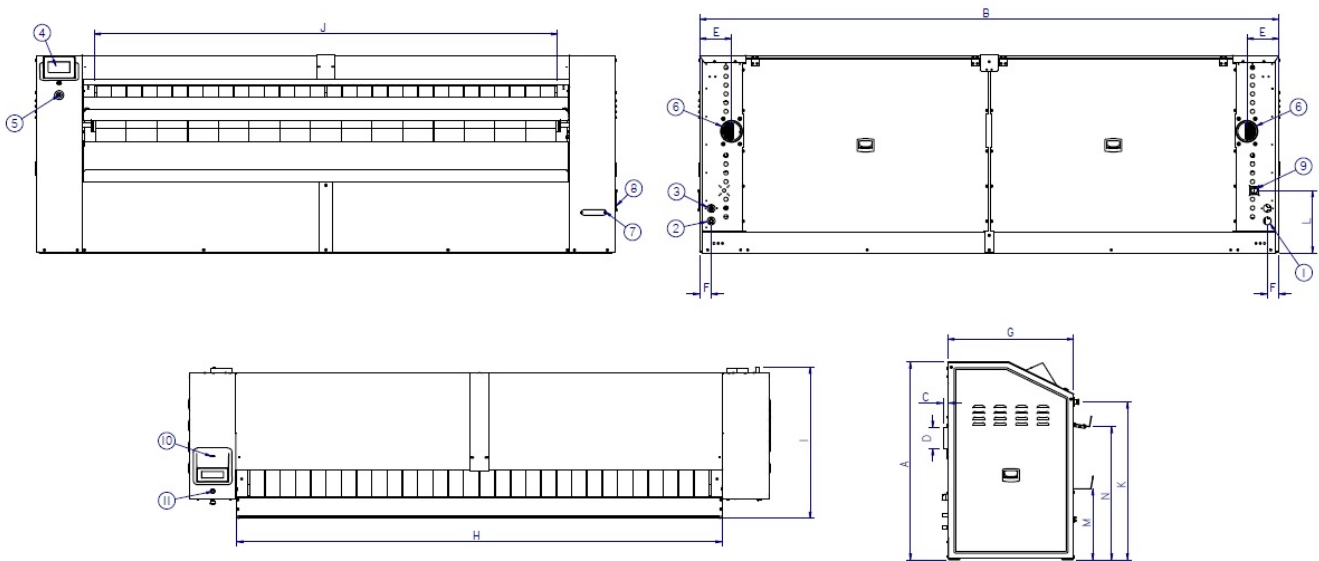
Chapter

Model

PS-65/200 TP2 G 120/230/400/440V 3N/3/1N

18002987

19/02/2020



	A	B	C	D	E	F	G	H	I	J	K	L	M	N
PS-65/330	1413	4129	36	Ø152	228	83	897	3460	1079	3304	1128	447	509	952
PS-65/260	1413	3429	36	Ø152	228	83	897	2760	1079	2604	1128	447	509	952
PS-65/200	1413	2829	36	Ø152	228	83	897	2160	1079	2004	1128	447	509	952
PS-50/330	1413	4129	36	Ø152	228	83	897	3460	1079	3304	1128	447	509	952
PS-50/260	1413	3429	36	Ø152	228	83	897	2760	1079	2604	1128	447	509	952
PS-50/200	1413	2829	36	Ø152	228	83	897	2160	1079	2004	1128	447	509	952

PS-65-50

- 1 Arrivée électrique
- 2 Arrivée gaz ou vapeur
- 3 Sortie vapeur
- 4 Panneau de commande
- 5 Arrêt d'urgence
- 6 Evacuation gaz brûlés et/ou buées
- 7 Contacteur manivelle
- 8 Manivelle
- 9 Sectionneur
- 10 Port USB
- 11 Marche arrière

PS-65-50

- 1 Electrical connetion
- 2 Gas or steam inlet
- 3 Steam outlet
- 4 Control panel
- 5 Emergency stop
- 6 Exhaust
- 7 Crank contactor
- 8 Crank
- 9 Main switch
- 10 USB Port
- 11 Start / Stop

PS-65-50

- 1 Conexión eléctrica
- 2 Entrada de gas o vapor
- 3 Salida de vapor
- 4 Pnael de control
- 5 Parada de emergencia
- 6 Salida de vahos
- 7 Contactor de manivela
- 8 Manivela
- 9 Interruptor general
- 10 Puerto USB
- 11 Start / Stop